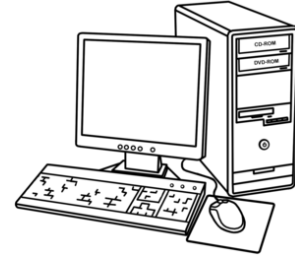
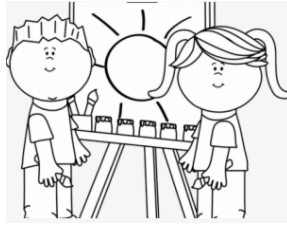


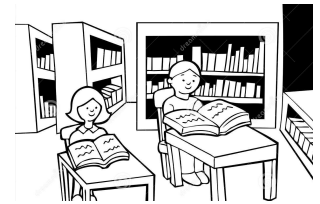
## Special Areas – 5<sup>th</sup> Grade



Dear Parents,

This page contains work from your child's Special Area teachers at Ellicottville Central School, to be done in case of an emergency school closure. This work includes simple tasks for each subject area that your child should be working on as part of their virtual learning experience, in addition to their core classes.

See below for assignments to complete while students are learning remotely.  
Please try to aim for one (1) special area assignment per day of remote learning.



Art – Mrs. Lechner

- Draw a self-portrait and color it in

Computers – Mrs. Reed

- Xtra math daily for math fluency, study island or IXL for 30 minutes 2x a week. Subjects to choose would be math or ELA. Typing club-aim for at least 30 minutes a week

Library – Mrs. Illig

- Explain what a database is, and why is it best to use an article from a database rather than to google results

Music – Ms. Waldron

- Write down the words for the "Star Spangled Banner" and sing it for a family member

Physical Education – Mr. Mendell

- Go for a walk, hike, bike ride, jump rope, or play your favorite sport

*we will get thru this*  
**TOGETHER**



If you have any questions about the work that is to be completed, please contact the appropriate teacher (contact information below). Thank you for your support and cooperation. Please reach out with questions at any time, and remember, we will get through this together!

The link to our Virtual Classrooms can be found on the school website, if you're looking for more activities. Go to [www.ellicottvillecentral.com](http://www.ellicottvillecentral.com), click "Elementary", then "Remote Learning Docs"

Mrs. Lil Lechner  
[llechner@ecsny.org](mailto:llechner@ecsny.org)  
(716) 699-2318 Ext. 1172

Mrs. Pam Illig  
[pillig@ecsny.org](mailto:pillig@ecsny.org)  
(716) 699-2318 Ext. 1105

Ms. Pat Waldron  
[pwaldron@ecsny.org](mailto:pwaldron@ecsny.org)  
(716) 699-2318 Ext. 1127

Mrs. Heather Reed  
[hreed@ecsny.org](mailto:hreed@ecsny.org)  
(716) 699-2318 Ext. 1138

Ms. Kathy Weller  
[kweller@ecsny.org](mailto:kweller@ecsny.org)  
(716) 699-2318 Ext. 1147

Mr. Chris Mendell  
[cmendell@ecsny.org](mailto:cmendell@ecsny.org)  
(716) 699-2318 Ext. 1151